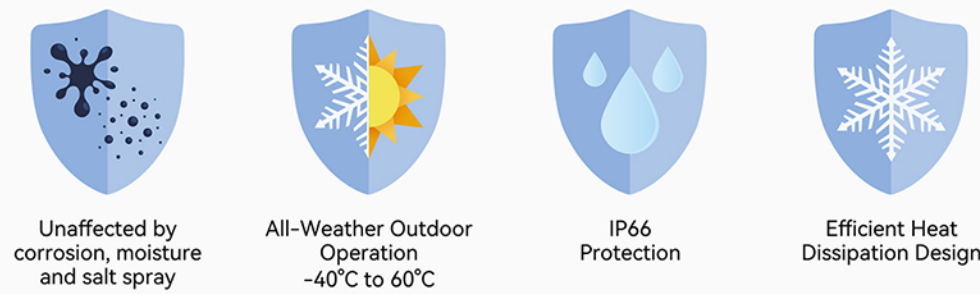


Stable Performance and High Protection



The FO series features a reliable die-cast aluminum housing with special treatments, making it ideal for coastal areas, beaches, and swimming pools while resisting salt spray erosion. Its innovative heat dissipation design minimizes external and internal thermal effects, maintaining normal operating temperatures. With an IP66 protection rating, it offers superior waterproof performance for stable operation in harsh conditions.

New Added Screw-in Breather Vents

A new set of screw-in breather vents has been added to the back of the module, allowing for the adjustment of internal air pressure, counteracting temperature rise, and balancing the internal environment.



Hassle-free Front & Rear Maintenance



It supports front and rear installation and maintenance, flexible installation and use.

Optimized Structure Flexible Installation

- Supports ground, suspended, and wall-mounted installations.
- Hard connections without steel structures.
- Each module includes safety cables for easy installation and replacement.
- Lightweight design enables quick, hidden cable installation.

Different Sizes Can Also Be Spliced

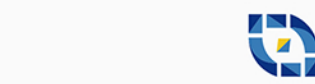


The FO Series supports interconnection between different sizes, allowing seamless splicing for versatile display configurations.



FO SERIES

OUTDOOR FIXED INSTALLATION



Lightking Tech Group Co., Ltd.

www.lightking-led.com

Building A, Zhongsheng Industrial Park, No. 4

Lixin Road, Bao'an District, Shenzhen, China

TEL: +86-755-81467007

E-mail: service1@lightking.hk

Twitter: @lightkingLED

Facebook: Lightking Tech Group Co., Ltd.

Youtube: @LightkingLED

LinkedIn: Lightking Tech Group Co., Ltd.



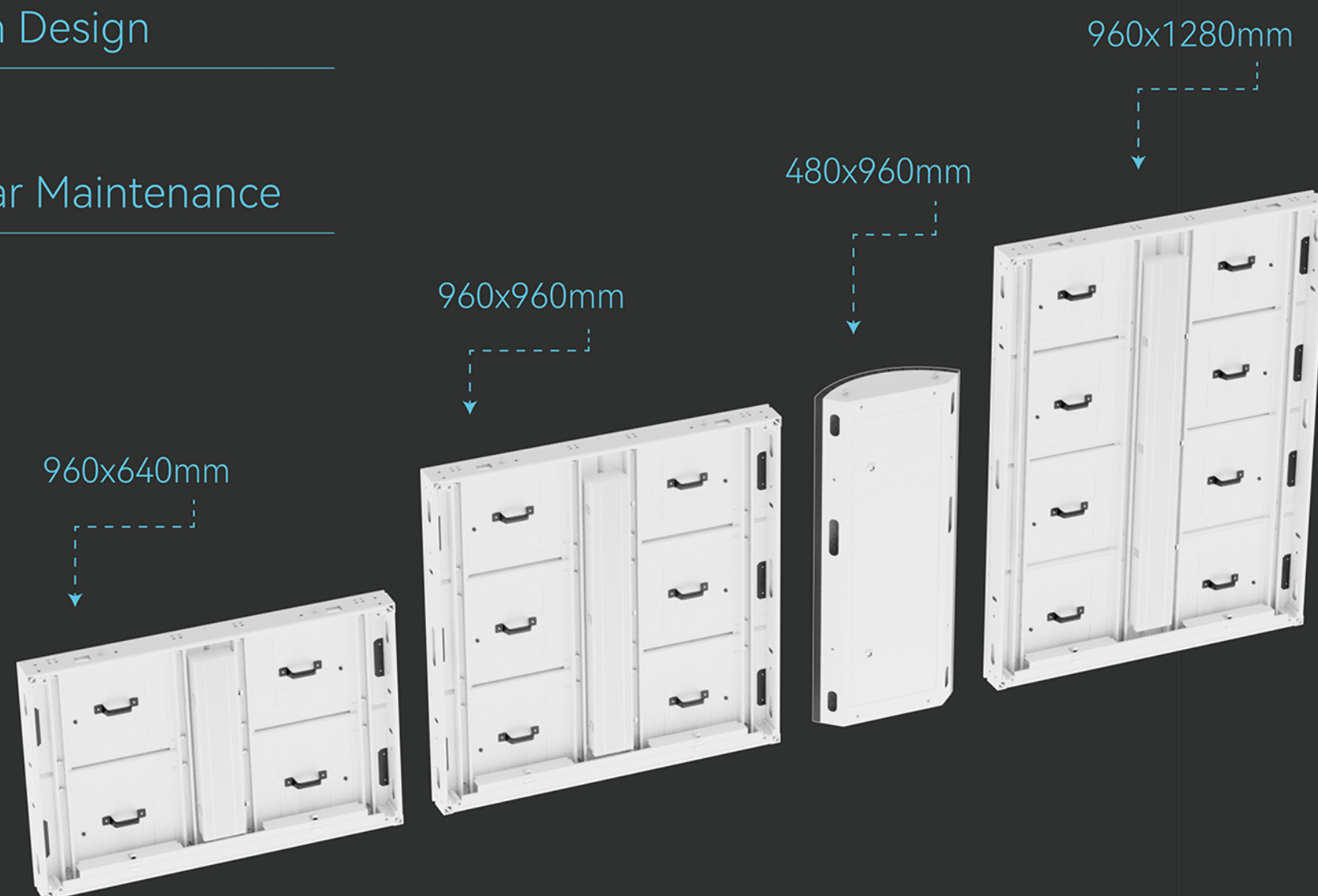
Product Advantages

Lightweight and Ultra-thin Design

Hassle-Free Front and Rear Maintenance

Common Cathode with Energy-saving

Thickness **87.5 mm** Weight **18/25/32 Kg & 15 Kg**



Ultimate Heat Dissipation

Die-Cast Aluminum Module with High Protection

Built to Handle Tough Outdoor Weather Conditions with Ease

FO Series



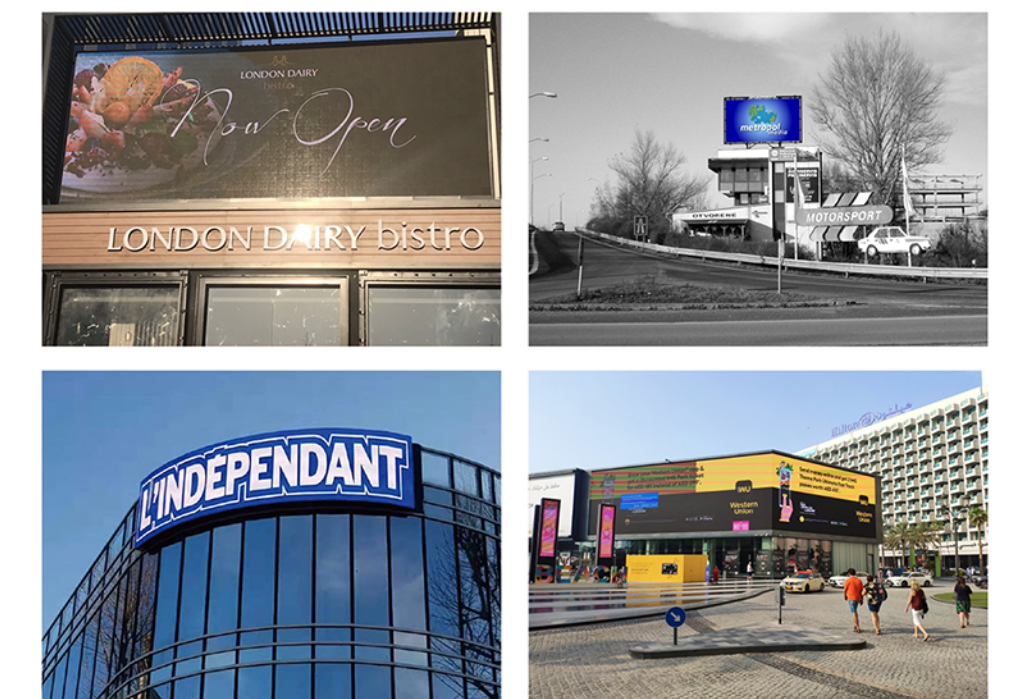
The FO series uses common cathode power-saving technology to lower screen temperature and power consumption, combined with a four-level energy-saving system for efficiency. It boasts a 3840Hz refresh rate, over 16-bit grayscale, and a wide 140° viewing angle for detailed, realistic images. The modular structure allows versatile installation and easy maintenance, while row-level blanking enhances display performance. Its IP66 die-cast aluminum cabinet ensures corrosion, fire, and moisture resistance, ideal for harsh outdoor environments. Excellent heat dissipation eliminates the need for air conditioning, ensuring stable, durable performance in all-weather conditions.

It supports 90-degree splicing, achieving a perfect rounded corner transition.



Flexible Display Creative Solution

Case Studies



Specifications

Part Number	FO5.7	FO6.67	FO8	FO10
Pixel Pitch	5.7mm	6.67mm	8mm	10mm
LED Type	SMD2727	SMD2727	SMD2727	SMD2727
Pixel Configuration	1R1G1B	1R1G1B	1R1G1B	1R1G1B
Module Size (mm)	480x320x23.5	480x320x23.5	480x320x23.5	480x320x23.5
Module Resolution	84x56	72x48	60x40	48x32
Density (dots/m ²)	30625	22500	15625	10000
Cabinet Size (mm)	960 x 640/960/1280 x 87.5	480 x 960 x 87.5	480 x 960 x 87.5	
Cabinet Material	Aluminium	Aluminium	Aluminium	Aluminium
Cabinet Weight	18/25/32/15Kg	18/25/32/15Kg	18/25/32/15Kg	18/25/32/15Kg
Maintenance Method	Front/Back Service	Front/Back Service	Front/Back Service	Front/Back Service
Max Power Consumption	400W/M ²	400W/M ²	400W/M ²	400W/M ²
Average Power Consumption	135W/M ²	135W/M ²	135W/M ²	135W/M ²
Colors	16.7M	16.7M	16.7M	16.7M
Gray Scale	16bits	16bits	16bits	16bits
Color Temperature	6500-9000K	6500-9000K	6500-9000K	6500-9000K
Refresh Frequency	≥3840Hz	≥3840Hz	≥3840Hz	≥3840Hz
Brightness (cd/m ²)	6000	6000	6000	6000
Brightness Control	256 grade	256 grade	256 grade	256 grade
IP Grade	IP66	IP66	IP66	IP66