

Stable Performance and High Protection



The FOB series features a reliable die-cast aluminum housing with special treatments, making it ideal for coastal areas, beaches, and swimming pools while resisting salt spray erosion. Its innovative heat dissipation design minimizes external and internal thermal effects, maintaining normal operating temperatures. With an IP66 protection rating, it offers superior waterproof performance for stable operation in harsh conditions.

New Added Screw-in Breather Vents

A new set of screw-in breather vents has been added to the back of the module, allowing for the adjustment of internal air pressure, countering temperature rise, and balancing the internal environment.



Hassle-free Front & Rear Maintenance



It supports front and rear installation and maintenance, flexible installation and use.

Optimized Structure Flexible Installation

- Supports ground, suspended, and wall-mounted installations.
- Hard connections without steel structures.
- Each module includes safety cables for easy installation and replacement.
- Lightweight design enables quick, hidden cable installation.

Different Sizes Can Also Be Spliced



The FOD Series supports interconnection between different sizes, allowing seamless splicing for versatile display configurations.



FOD SERIES

OUTDOOR FIXED INSTALLATION



Lightking Tech Group Co., Ltd.
 www.lightking-led.com
 Building A, Zhongsheng Industrial Park, No. 4
 Lixin Road, Bao'an District, Shenzhen, China
 TEL: +86-755-81467007
 E-mail: service1@lightking.hk

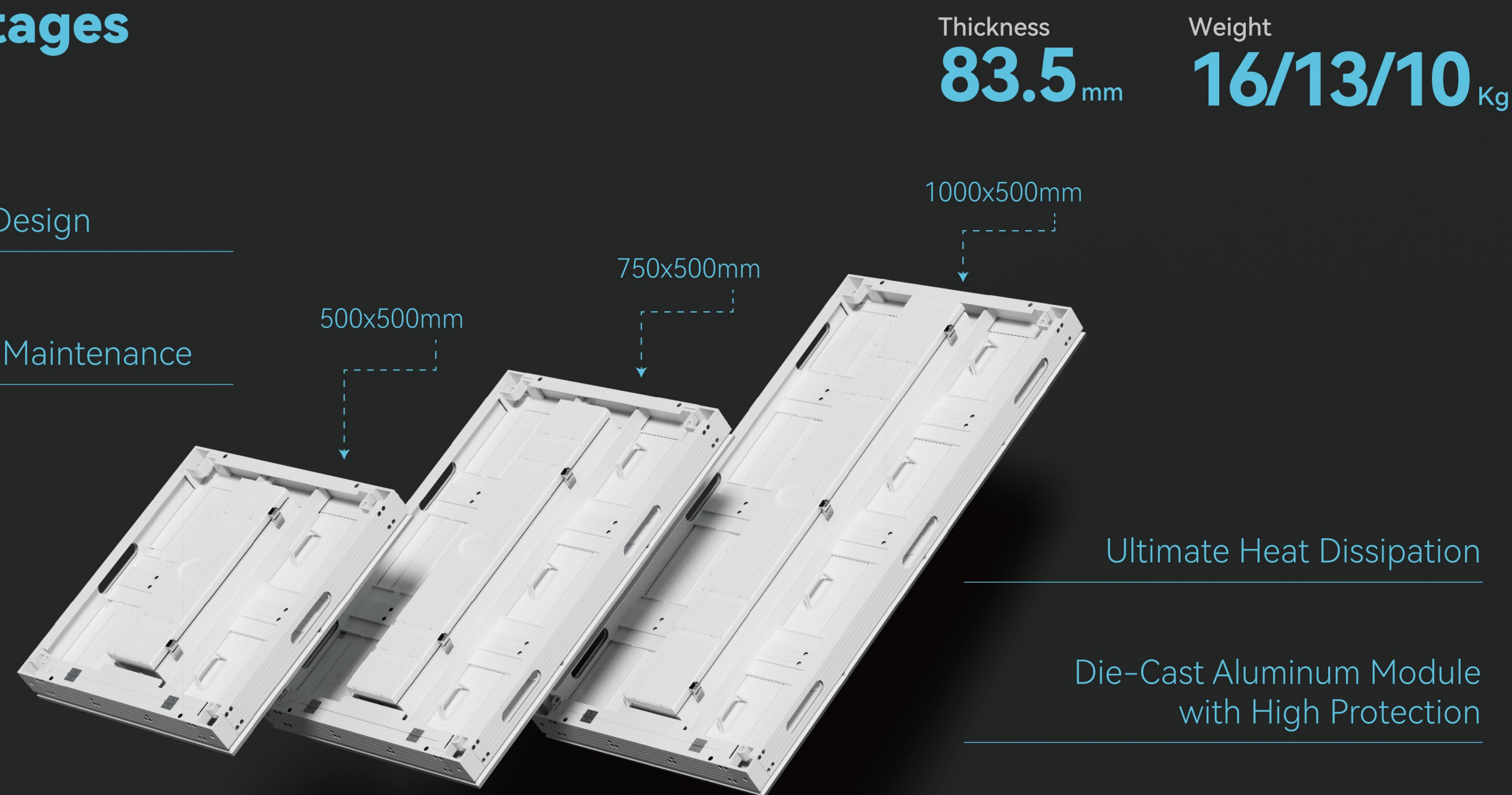
Twitter: @lightkingLED
 Facebook: Lightking Tech Group Co., Ltd.
 Youtube: @LightkingLED
 LinkedIn: Lightking Tech Group Co., Ltd.

Product Advantages

Lightweight and Ultra-thin Design

Hassle-Free Front and Rear Maintenance

Common Cathode with Energy-saving



Ultimate Heat Dissipation

Die-Cast Aluminum Module with High Protection

Ultra-Clear Image with Over 3840Hz Refresh Rate

FOD Series

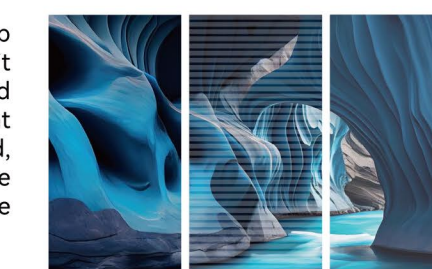


The FOD series features common cathode energy-saving technology, reducing screen temperature by 14.6°C and power consumption by over 20%. Its four-stage energy-saving approach enhances efficiency. The modular design supports various flexible installation methods without the need for steel structures, effectively lowering costs.

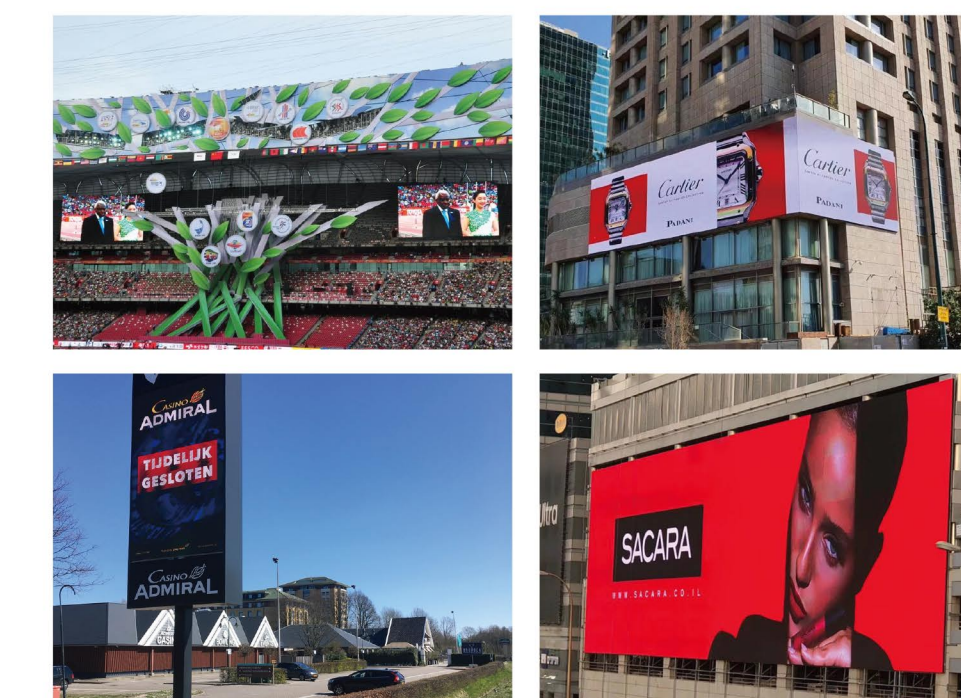
Designed for outdoor use, the FOD series boasts an IP66 protection rating and a corrosion-resistant, flame-retardant die-cast aluminum housing. It also offers excellent heat dissipation, ensuring long-lasting performance even in harsh environments.

Darker and Brighter! Provides Ultra-clear Images

The FOD series features a refresh rate of up to 3840Hz, high contrast, and over 16-bit grayscale, delivering realistic and detailed visuals with stable, uniform brightness that is glare-free and pixelation-free. The red, green, and blue 3-in-1 LED beads ensure excellent consistency, with a viewing angle exceeding 140°.



Case Studies



Specifications

Part Number	FOD3.9	FOD4.8	FOD5.9
Pixel Pitch	3.9mm	4.8mm	5.9mm
LED Type	SMD1921	SMD1921	SMD1921
Pixel Configuration	1R1G1B	1R1G1B	1R1G1B
Module Size (mm)	500x250x19.5	500x250x19.5	500x250x19.5
Module Resolution	128x64	104x52	84x42
Density (dots/m ²)	65536	43264	28224
Cabinet Size (mm)	500x1000/750/500x83.5	500x1000/750/500x83.5	500x1000/750/500x83.5
Cabinet Material	Aluminium	Aluminium	Aluminium
Cabinet Weight	16Kg/13Kg/10Kg	16Kg/13Kg/10Kg	16Kg/13Kg/10Kg
Maintenance Method	Front/Back Service	Front/Back Service	Front/Back Service
Max Power Consumption	480W/M ²	480W/M ²	480W/M ²
Average Power Consumption	160W/M ²	160W/M ²	160W/M ²
Colors	16.7M	16.7M	16.7M
Gray Scale	16bits	16bits	16bits
Color Temperature	6500-9000K	6500-9000K	6500-9000K
Refresh Frequency	≥3840Hz	≥3840Hz	≥3840Hz
Brightness (cd/m ²)	6000	6000	6000
Brightness Control	256 grade	256 grade	256 grade
IP Grade	IP66	IP66	IP66