



LIGHTKING

NEW solution for outdoor fixed installation

KB Series

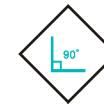
KB series(P3.9,P4.8,P5.9,P7.8) is the most robust , high definition LED video display designed for the high demands for outdoor fixed installation market.



Super light & thin



IP65 & excellent heat dissipation



90° connection



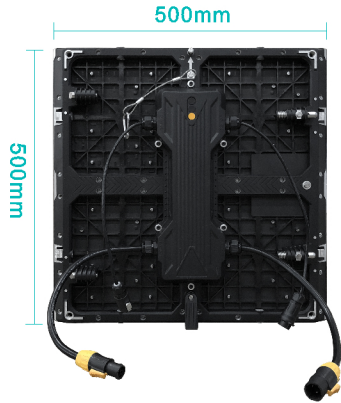
Front servicing available



01

Super light & thin

Super light weight cabinet of 6KG each.



6KG each panel

IP65 & excellent heat dissipation

02

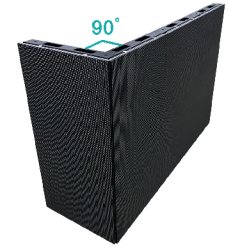
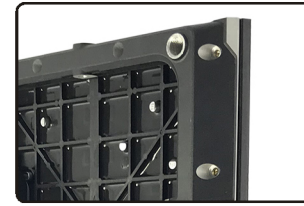


PG connector for water-proof protection

Silicone directly applied on module for better heat dissipation and protection

03

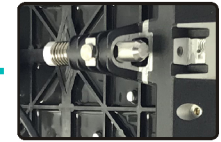
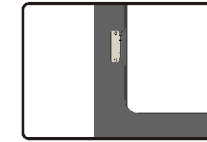
90° connection available



45° chamfer on cabinet side support 90° connection

Front servicing available

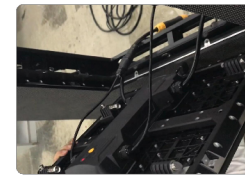
04



User-defined bracket supports cabinet to be serviced from the front

Special-designed lock fixes the cabinets onto the bracket

How to install a cabinet onto the bracket



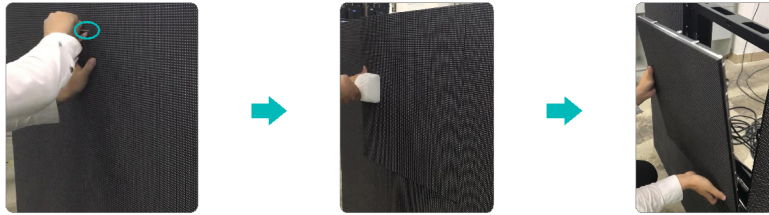
Step1: Connect the cables and pull the lockout.

Step2: Locate the cabinet pin into the bracket hole.



Step3: Push the cabinet lightly to fix the cabinet onto the bracket with the lock.

◆ How to take the cabinet from the front



step 1

step 2

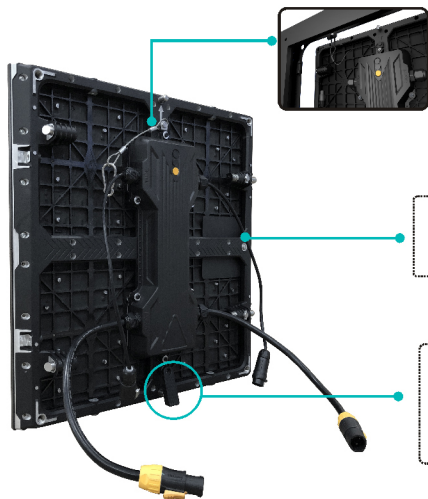
step 3

Step1: Push the special tool into module hole to unlock the spring pin.

Step2: Use the magnet tool to take out the cabinet from the front.

Step3: Pull out the cables between the cabinets.

05 Other thoughtful designs



Hang the rope on the bracket before installation to prevent the cabinet from falling.

Build-in cables for fast cable connection.

Rotatable upholder keeps cabinet stand upright to save space before/in the installation.

■ Applications

KB series, a new solution for fixed application, it supports : curve connection, 90° connection, double-face application, cube connection, etc.



■ Specifications

Part number	KB3	KB4	KB5	KB7
Pixel pitch	3.9mm	4.8mm	5.9mm	7.8mm
Size of module	250mmx250mm	250mmx250mm	250mmx250mm	250mmx250mm
Resolution of module	64x64	52x52	42x42	32x32
Density	65536 dots/m ²	43264 dots/m ²	28224 dots/m ²	16384 dots/m ²
Cabinet material	Alu	Alu	Alu	Alu
Size of cabinet	500mmx500mm	500mmx500mm	500mmx500mm	500mmx500mm
Weight of cabinet	6 kg	6 kg	6 kg	6 kg
Support front maintenance or not	Yes	Yes	Yes	Yes
Support curve or not	Yes	Yes	Yes	Yes
Max power consumption	850W/m ²	850W/m ²	850W/m ²	850W/m ²
Average power consumption	283W/m ²	283W/m ²	283W/m ²	283W/m ²
Colors	16.7M	16.7M	16.7M	16.7M
Gray scale	14Bits	14Bits	14Bits	14Bits
Driving method	1/8 scanning	1/9 scanning	1/7 scanning	1/4 scanning
Refresh frequency	>1920Hz	>1920Hz	>1920Hz	>1920Hz
Brightness	4000cd/m ²	6000cd/m ²	6000cd/m ²	6000cd/m ²
IP grade	IP65(IP67 is available)	IP65(IP67 is available)	IP65(IP67 is available)	IP65(IP67 is available)